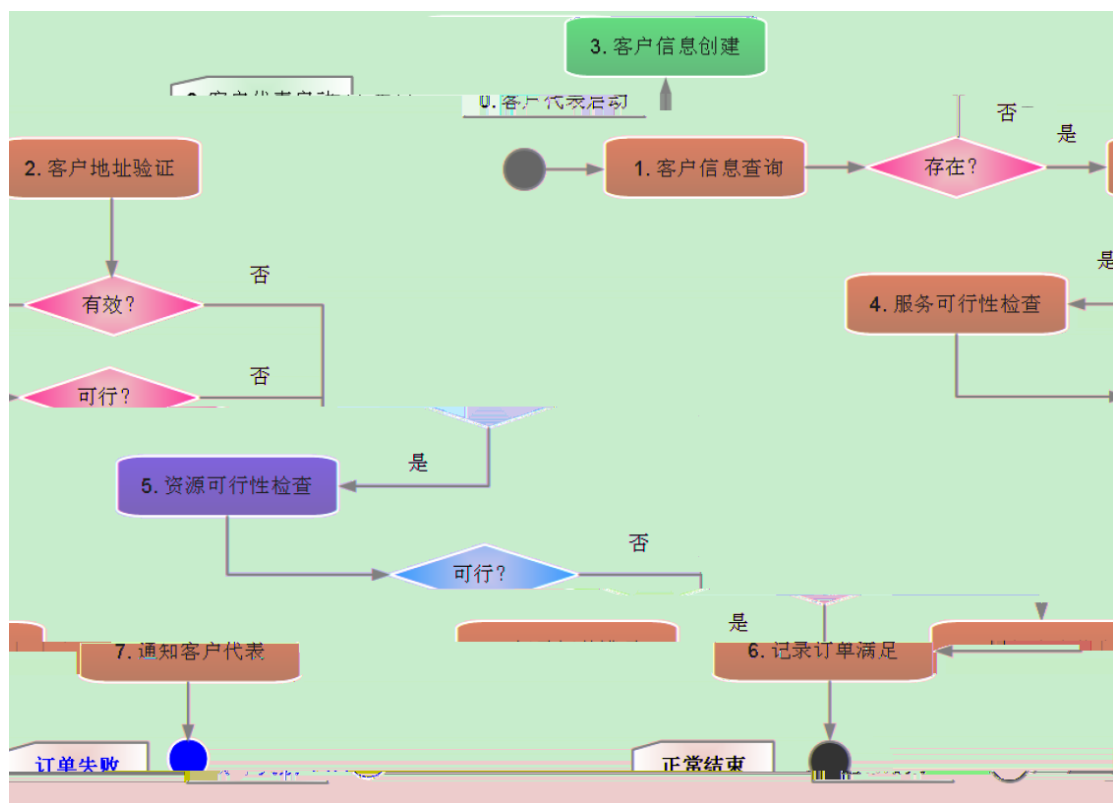
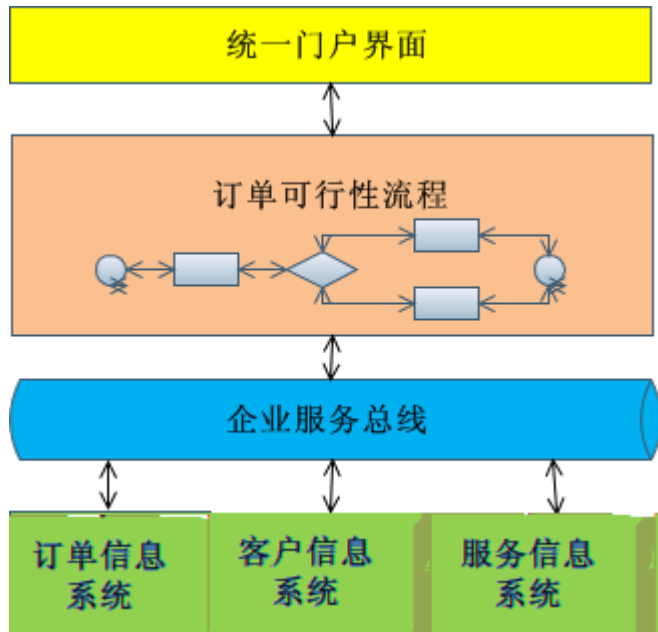


Atomic 

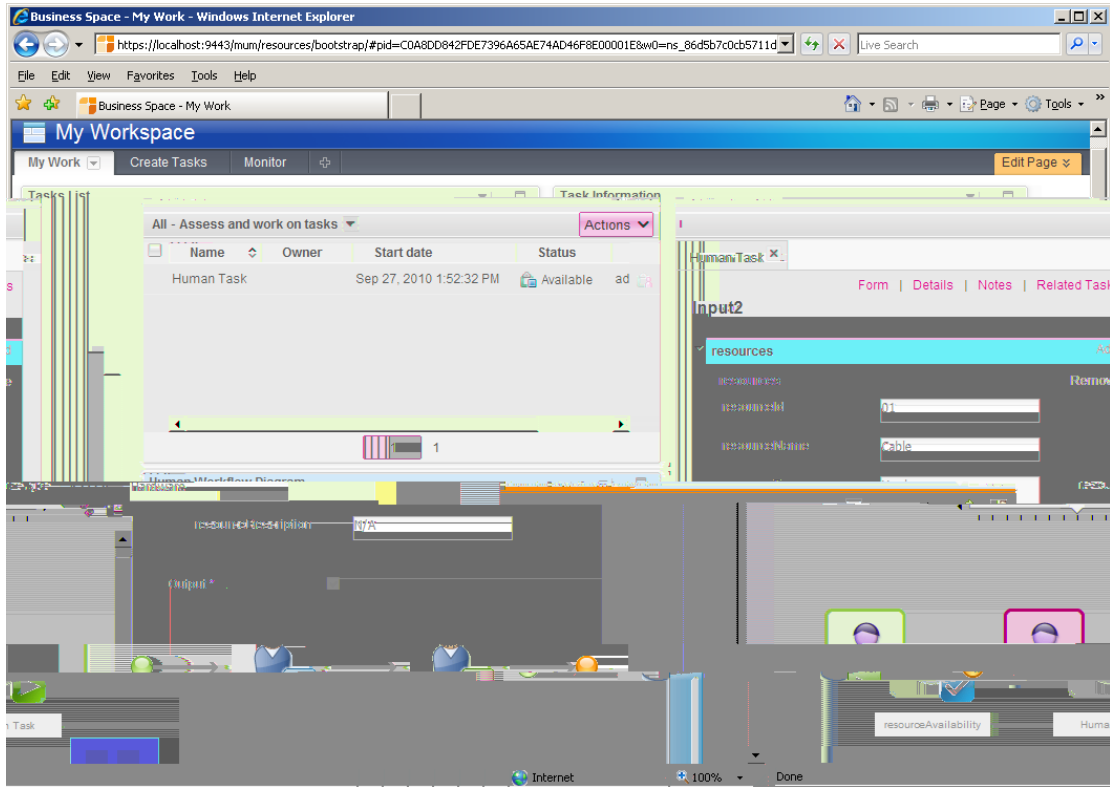


1

1

2

3



1 Performance

5

	8:00 AM - 5:00 PM, Monday – Friday
	5:00 PM - 8:00 AM, Monday Friday
	0:00-24:00, Saturday and Sunday

6

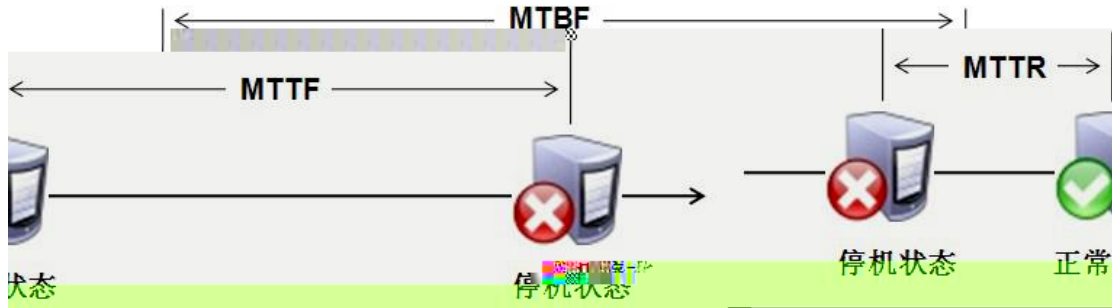
UG1	1000	500	FA1	100 50
			FA2	50 20
			FA3	50 20

7

10	<2	<5	<8
20	<3	<6	<10
30	<4	<7	<12
50	<5	<8	<14

2 Availability

MTTR Mean Time To Restoration
 MTTF Mean Time To Failure
 MTBF Mean Time Between Failure



MTTF/MTBF 99.9%
 MTTR $365 * 24 * 0.1\% = 8.76$ (525)
 3 99.999%

3 Scalability

SOA

IT

IT

IT

Modeler

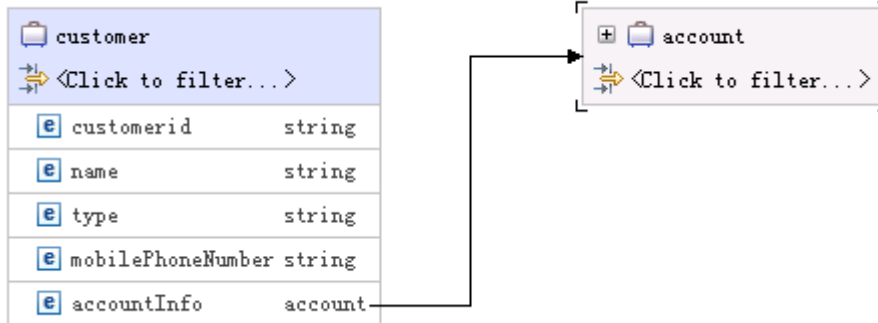
Modeler

Business Item

1. account

account	
<Click to filter...>	
e accountID	string
e accountName	string
e accountType	string
e credit	int

2. customer



3. address

address	
<Click to filter...>	
e city	string
e street1	string
e street2	string
e postcode	string

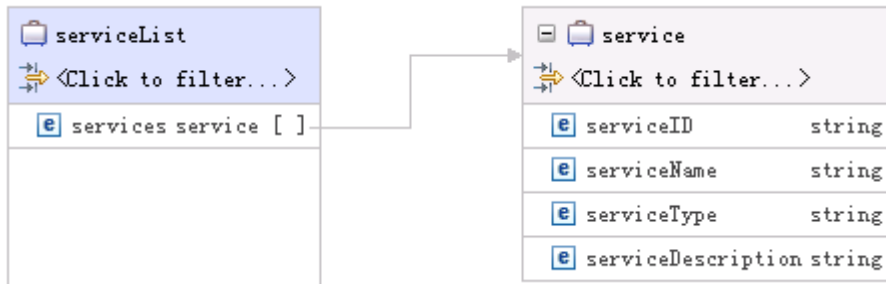
4. service

service	
<Click to filter...>	
string	e serviceID
string	e serviceName
string	e serviceType
description string	e serviceDesc

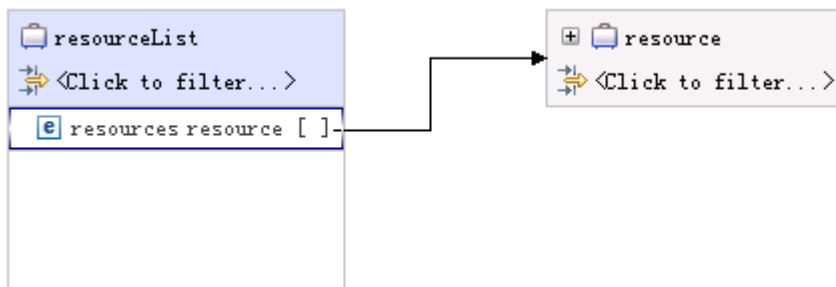
5. resource

resource	
⌕ <Click to filter...>	
resourceId	string
resourceName	string
resourceType	string
resourceDescription	string

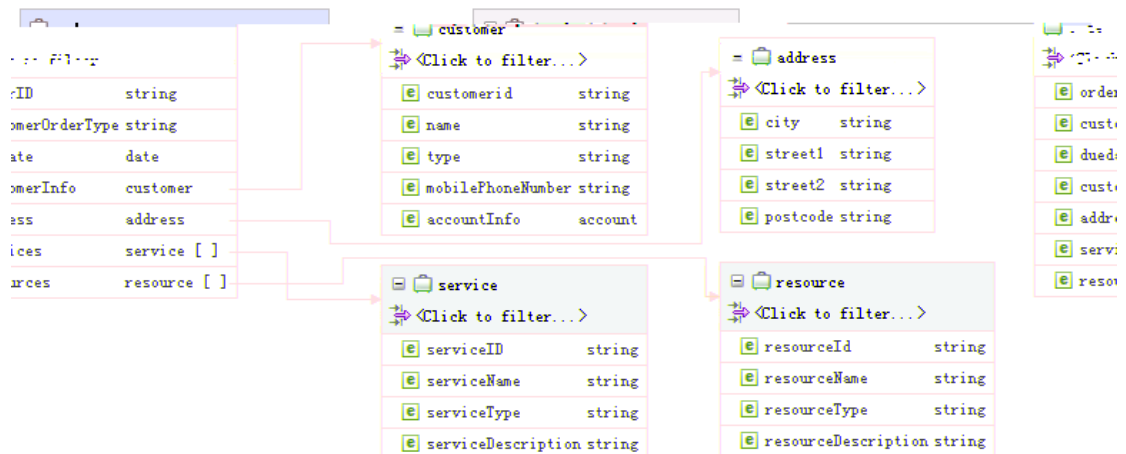
6. serviceList



7. resourceList



8. order



Web Services

WSDL WID WSDL Modeler
 Modeler Business Service

1

▼Interface

Configuration

Name	OrderFeasibility	Refactor name
Namespace	http://SoaTraining/OrderFeasibility	Refactor namespace
Binding Style	document literal wrapped	Change binding style to document literal non-wrapped More...

▼Operations

Operations and their parameters

Name	Type
start	
Inputs	input1
	order

order

2.

▼Interface

Configuration

Name	CustomerServiceInterface	Refactor name
Namespace	http://SoaTraining/CustomerServiceInterface	Refactor namespace
Binding Style	document literal wrapped	Change binding style to document literal non-wrapped More...

▼Operations

Operations and their parameters

Name	Type
query	
inputs	input1
	customer
outputs	output1
	boolean
create	
inputs	input1
	customer
outputs	output1
	boolean

customer
 boolean , true false

Web Services

3.

▼Interface

Configuration

Name	addressServiceInterface	Refactor name
Namespace	http://SoaTraining/addressServiceInterface	Refactor namespace
Binding Style	document literal wrapped	Change binding style to document literal non-wrapped More...

▼Operations



Operations and their parameters

Name	Type
verify	
Inputs	input1
	address
Outputs	output1
	boolean

address
 boolean







Web Services

4.



▼Interface  

Configuration

Name	CustomerServiceInterface	Refactor name
Namespace	http://SoaTraining/CustomerServiceInterface	Refactor namespace
Binding Style	document literal wrapped	Change binding style to document literal non-wrapped More...

▼Operations      



Operations and their parameters

	Name	Type
▼  query		
↳ Inputs	input1	customer
↳ Outputs	output1	boolean
▼  create		
↳ Inputs	input1	customer
↳ Outputs	output1	boolean

customer
boolean







Web Services

5.


▼Interface  

Configuration

Name	servicesAvailabilityInterface	Refactor name
Namespace	http://SoaTraining/servicesAvailabilityInterface	Refactor namespace
Binding Style	document literal wrapped	Change binding style to document literal non-wrapped More...

▼Operations      

Operations and their parameters

	Name	Type
▼  verifyAvailability		
↳ Inputs	input1	serviceList
↳ Outputs	output1	boolean

serviceList
boolean

Web Services

6.

▼Interface  

Configuration

Name	resourcesAvailabilityInterface	Refactor name
Namespace	http://SoaTraining/resourcesAvailabilityInterface	Refactor namespace
Binding Style	document literal wrapped	Change binding style to document literal non-wrapped More...

▼Operations      

Operations and their parameters

	Name	Type
▼  verifyAvailability		
↳ Inputs	input1	resourceList
↳ Outputs	output1	boolean

resourceList
boolean

7.

▼Interface

Configuration

Name	orderServiceInterface	Refactor name
Namespace	http://SoaTraining/orderServiceInterface	Refactor namespace
Binding Style	document literal wrapped	Change binding style to document literal non-wrapped More...

▼Operations

Operations and their parameters

	Name	Type
▼ record		
Inputs	input1	order
Outputs	output1	boolean

order
boolean

Web Services

8.

▼接口

配置

名称	a7notifyService	重构名称
名称空间	http://soaTraining/Processes/orderFeasibilityProcess/a7notifyService/a7notifyServiceInterface	重构名称空间
绑定样式	document literal wrapped	将绑定样式更改为 document literal non-wrapped 更多...

▼操作

操作及其参数

	名称	类型
▼ a7notifyService		
输入	Input	order
输出	failReason	string

order
string

Modeler

Business Service

Sub Process ,

Human Task

Business

Service

SOA

	UC1201
	/

Web Services

WID

wSDL

Web Services Web Services
Web Services

SOA

Web Services
ESB

WID

Web Services
ESB

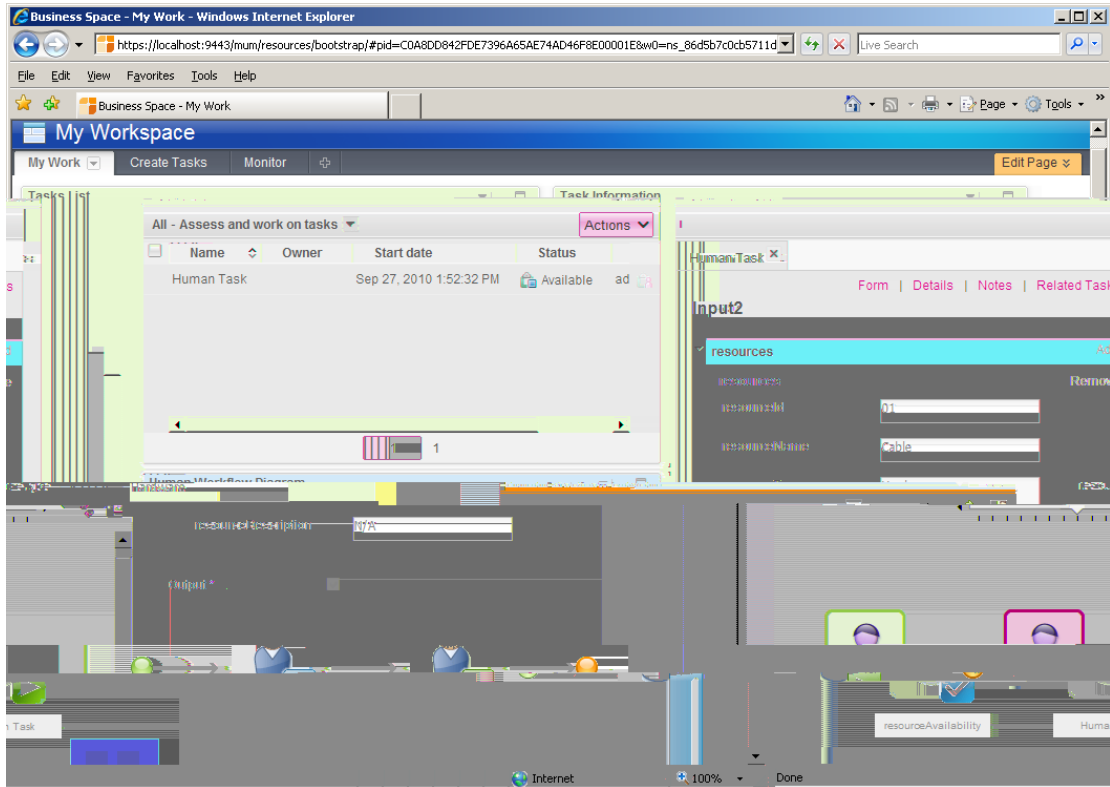
SCA

HTML-dojo

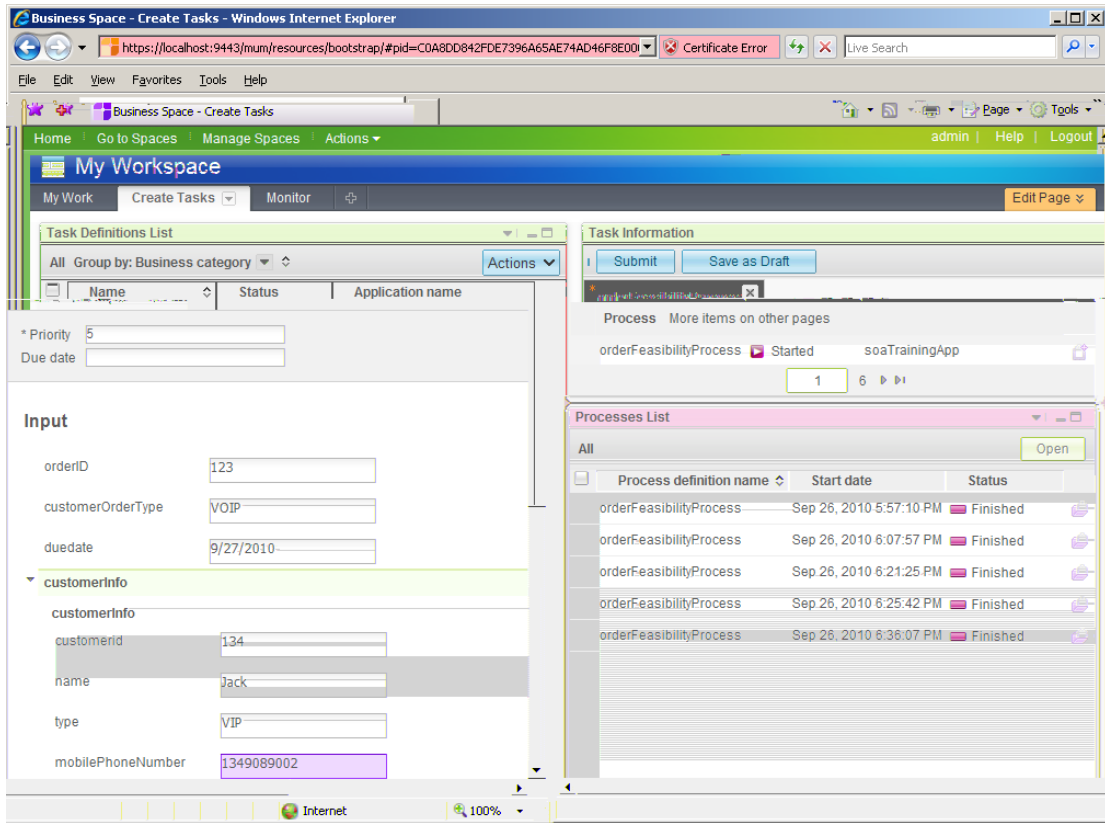
WID

BPC explorer

Business Space My Work Create
 TasksMy Work Tasks List Task Information Human Workflow
 Diagram widget Task List Task Information
 Human Workflow Diagram



Create Tasks Task Definition List Task Information Processes
 List Task Definition List Task Information
 Processes List



WPS

Business Space

*.zip

*.ear

WPS

*.zip (Business Space)

SOA

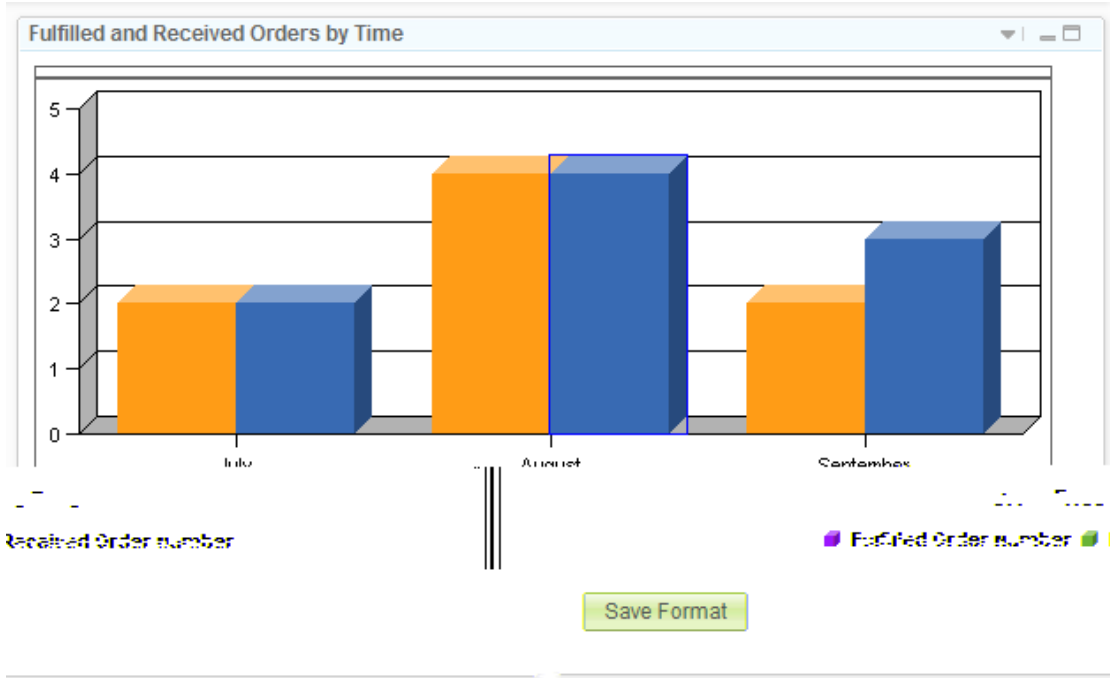
Monitor

Monitor

1. Telecom theme template Business Space Dashboard.
2. Instance View
3. KPI View



4. Dimension View



Monitor

Business Space

*.PI

*.ear

Monitor
(Dashboard)*.zip

Business Space Dashboard